



VICTORIAN NOTICE TO MARINERS

The following Notice to Mariners is published for general information.

Barwon Heads, 6 March 2025
AUSTRALIA – VICTORIA

No. 135(T) - 25

LOCAL PORT OF BARWON HEADS

Barwon Heads – Barwon River Boating Channel-South of Barwon Heads **Channel Safety Realignment – Stage 1** **Barge Towage and Beacon Installation Operations – Barwon River Mouth**

Date: Effective from 11 March 2025

Details: Mariners are advised that barge towage and beacon installation operations will take place in the Barwon Heads river mouth south of the Barwon Heads pedestrian bridge from 11 March 2025 for a period of approximately 4 weeks. Work barge GEMINAE UVI1461535, 6.4m length x 3.2m beam will be used for beacon installation operations with high powered vessels up to 8m conducting towage operations.

Approximate positions of the work barge are as follows (WGS84):

1.Starboard Buoy No.1	38°17.106'S	144°30.008'E (Fl.G.4s)
2.Port Buoy No.2	38°17.120'S	144°30.004'E (Fl.R.4s)

Mariners are advised to navigate with extreme caution in the vicinity of the Barwon Heads river mouth boating channel during daylight hours from 11 March 2025. Mariners should consider completely avoiding this area during these times.

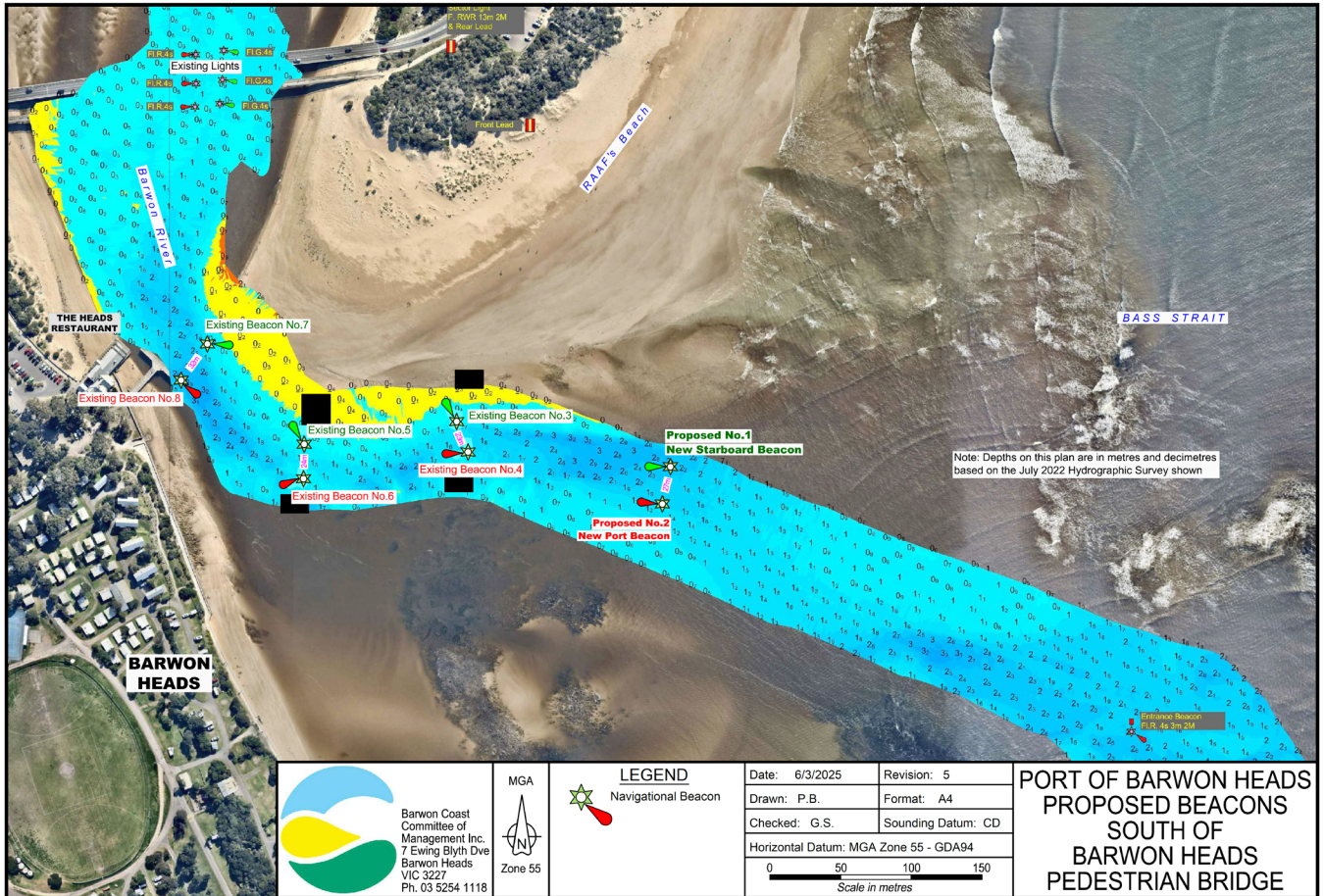
Charts & Publications Affected: AUS143

Further Notice: A further notice will be issued.

This Notice to Mariners is issued by the Barwon Coast Committee of Management Inc. delegated Local Port Manager for the Department of Transport and Planning. If you require any further information, please contact Barwon Coast on (03) 5254 1118.

Victorian Notices to Mariners can also be viewed on the Barwon Coast website www.barwoncoast.com.au or on the Ports Victoria (PV) website <https://ports.vic.gov.au/>

Gareth Smith
Chief Executive Officer
Barwon Coast Committee of Management Inc.





 Barwon Coast
 Committee of
 Management Inc.
 7 Ewing Blyth Dve
 Barwon Heads
 VIC 3227
 Ph. 03 5254 1118

MGA

 Zone 55

LEGEND
 Navigational Beacon

Date: 6/3/2025	Revision: 5
Drawn: P.B.	Format: A4
Checked: G.S.	Sounding Datum: CD
Horizontal Datum: MGA Zone 55 - GDA94	
 Scale in metres	

**PORT OF BARWON HEADS
 PROPOSED BEACONS
 SOUTH OF
 BARWON HEADS
 PEDESTRIAN BRIDGE**